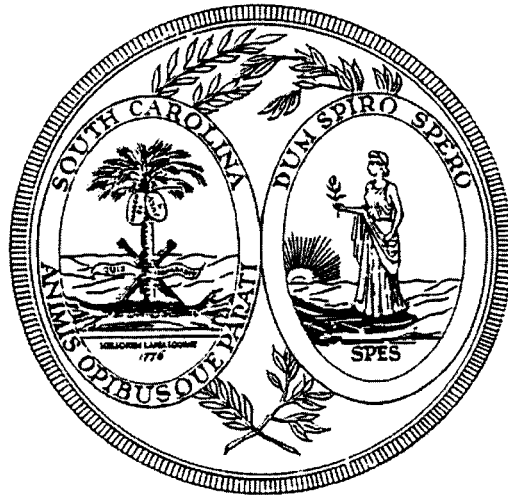


South Carolina Workers' Compensation Commission



ANNUAL REPORT
2005 - 2006

State of South Carolina

1612 Marion Street
P.O. Box 1715
Columbia, S.C. 29202-1715



TEL: (803) 737-5700
FAX: (803) 737-5764

Workers' Compensation Commission

December 1, 2006

To the Citizens of South Carolina:

The South Carolina Workers' Compensation Commission is pleased to provide a report of its activities and accomplishments for Fiscal Year 2005 - 2006. As documented in the following pages, the Commission has worked hard to continue to improve its administration and management of South Carolina's workers' compensation system. Fiscal year 2005 - 2006 was a very productive year for the Commission, with significant accomplishments in three major areas: the use of technology to improve operations, process times and medical cost containment.

Even with these gains, challenges remain and the Commission remains committed to providing an equitable and timely system of benefits to injured workers and employers in the most responsive, accurate, and reliable manner possible.

Sincerely,

David W. Huffstetler
Chairman

TABLE OF CONTENTS

| | |
|---|-------|
| Letter of Transmittal | i |
| Table of Contents | ii |
| Workers' Compensation in South Carolina | 1-3 |
| The Year in Review | 4-6 |
| Workers' Compensation and Vocational Rehabilitation | 7 |
| Legislation Passed During 2005-2006 | 8 |
| Workers' Compensation Commission | 9-11 |
| Organization Chart | 12 |
| Commissioners | 13 |
| Department and Division Directors | 14 |
| Financial Statement | 15-18 |
| Activity Summary and Statistical Abstract | 19 |
| Recapitulation | 20 |
| Aggregated Benefits | 21 |
| Compensation Rates | 22 |
| Cases Assigned | 23 |
| Injuries by Type of Disability and Industry | 24-25 |
| Location of Injury by Nature of Injury | 26-27 |
| Accidents Reported by County | 28 |
| Publications | 29-30 |

WORKERS' COMPENSATION IN SOUTH CAROLINA

Workers' compensation laws are designed to provide a satisfactory means of handling occupational disabilities. A 20th century development in North America, workers' compensation laws evolved as the economy became more industrial and less agricultural.

Before these laws were enacted, a well-established common-law principle held that a master or employer was responsible for the injury or death of employees resulting from a negligent act by the master or employer. Thus, disabled workers who sued employers for damages had to prove their injuries were due to employer negligence. This was often a very slow, costly, and uncertain legal process. As business enterprise and machine production expanded, the number of industrial accidents and personal injury suits increased. By the close of the 19th century, it became apparent that a new system -- one that was legally-based, economically-sound, and socially-acceptable -- had to be developed.

In 1911, the first workers' compensation laws were enacted in the United States on an enduring basis. Workers' compensation laws held that employers should assume the costs of occupational disabilities without regard to any fault involved. Resulting economic losses are considered costs of production, chargeable, to the extent possible, as a price factor. The laws serve to relieve employers of liability from common-law suits involving negligence in exchange for becoming responsible for medical costs and lost wages of on-the-job injuries regardless of fault.

Historically, six basic objectives underlie the workers' compensation laws:

1. Provide sure, prompt, and reasonable income and medical benefits to work-related accident victims, or income benefits to their dependents, regardless of fault;
2. Provide a single remedy and reduce court delays, costs, and judicial workloads arising out of personal injury litigation;
3. Relieve public and private charities of financial demands incident to uncompensated occupational accidents;
4. Minimize payment of fees to lawyers and witnesses as well as time-consuming trials and court appeals;
5. Encourage maximum employer interest in safety and rehabilitation through an appropriate experience-rating mechanism; and,
6. Promote frank study of the causes of accidents (rather than concealment of fault) in an effort to reduce preventable accidents and human suffering.

The South Carolina Industrial Commission was created on September 1, 1935, to administer and enforce South Carolina's first workers' compensation law. During the past seventy-one years, the law has been amended by statute, defined by case law, and altered through administrative policies and procedures; however, the basic premise and purpose of the law has remained unaltered. In May, 1986, the name of the Industrial Commission was changed to the more descriptive South Carolina Workers' Compensation Commission.

An employee may file an application for a hearing before a commissioner if the employer does not report the accident, if the employer denies that the injury was sustained in the course and scope of employment, or if the employee believes that he or she did not receive all of the available benefits. An employee may also file for a hearing if the employer does not begin compensation for more than seven days of disability within fourteen days after the employer has knowledge or notice of the accident, or in the event payment is made, if there is a subsequent disagreement over the continuance of any weekly payment. The hearing will usually take place in the county in which the injury occurred.

The decision of the hearing commissioner may be appealed to the Commission for review. A panel of either three or six commissioners, excluding the original hearing commissioner, will consider the appeal. The decision of the appellate panel may be appealed to a Court of Common Pleas and the State Appellate Courts.

The Workers' Compensation Commission is responsible for administering the workers' compensation law in South Carolina. The Commission works closely with the Governor, the General Assembly, and the Commission's many constituents to ensure that the workers' compensation system is fair, equitable, and responsive to the needs of the citizens of South Carolina.

THE YEAR IN REVIEW

Fiscal Year 2005-2006 was another productive year for the Commission. The General Assembly approved an additional \$1.1 million to complete the Commission's multi-year \$2.1 million project to develop and install a new computer system. In addition, the Commission's Hospital Advisory Committee completed its comprehensive review of the inpatient and outpatient fee schedules and submitted recommendations to the Commission.

The agency badly needed a new computer system, according to a report from the Division of the State Chief Information Officer at the State Budget and Control Board. The Commission had asked the CIO's office to assess its computer system and make recommendations for improvement. According to the CIO's office, the computer system that was state-of-the-art when installed in 1990 has since suffered from budget cuts and is now inadequate for the Commission's needs. As the infrastructure aged, the Commission's IT staff did an excellent job of keeping the technical environment operational. However, the technical infrastructure no longer can meet the current and future needs of the Commission and its clients. A new computer system will enable the us to provide more services online, along with giving us the capacity to conduct analyses and provide more meaningful reports to our clients.

On June 26, 2006 the Commission approved a new payment system for healthcare facilities treating workers compensation patients. Effective October 1, 2006 health care facilities will be paid 140% of the federal Medicare payment for inpatient and outpatient services. The Commission's decision, taken in response to rapidly rising medical care charges, is expected to save employers and insurance carriers as much as \$60 million annually. South Carolina is one of many states to adopt a "Medicare plus" model. These changes are based in part of the recommendation of the Commission's Hospital Advisory Committee. In a continuation of its efforts to assure that workers' compensation medical fee schedules adequately pay for services provided, ensure access to quality care and contain costs for business and industry, the South Carolina Workers' Compensation Commission reconvened the Hospital Advisory Committee in November 2004 to advise the Commission on what, if any, changes were necessary to improve the hospital inpatient payment system. The committee was charged with making recommendations on the establishment of an outpatient fee schedule. The fourteen member Advisory Committee is composed of representatives of the hospital industry, medical association, property and casualty insurance carriers, a self-insured fund, business and industry, and State Government.

The new payment system is a meaningful step towards moderating medical costs in workers compensation. Between 2000 and 2005, inpatient procedures for workers' compensation injuries declined by 8% but charges increased 118%. Over the same period, outpatient procedures in workers' compensation declined 9.6% and outpatient charges rose 64.2%.

South Carolina employers, injured workers, and other visitors will find lots of useful information at our newly redesigned website, wcc.sc.gov. Tabs across the page and on the left guide visitors in finding information related to claims, coverage, insurance, medical matters and judicial issues. A substantial undertaking by the Commission, resulted in better and more timely information being provided. The Commission developed an additional feature for its website providing anyone with internet access the ability to find insurance coverage for all South Carolina employers who are commercially insured. Employers can now verify workers' compensation insurance coverage online.

The popularity of the Commission's series of one-day seminars on claims management, *Claims Administration Made Easy*, continued as the Commission held two seminars in Columbia which were well attended. The workshops provide a thorough overview of the workers' compensation system in South Carolina, as well as a comprehensive review of claims-processing requirements. The workshops cover the legal and administrative requirements for submitting complete and accurate claims information. In addition, the Commission teamed up with the South Carolina Workers' Compensation Educational Association to co-sponsor the 29th Annual Workers' Compensation Medical Seminar, a three-day event devoted to medical issues relevant to workers' compensation.

At the beginning of FY 02-03, the time it took for an injured worker to receive a hearing had increased from between 90 to 120 days to in excess of 180 days from the request for a hearing. This past year the Commission continued to work diligently to reduce that time. By mid 2005 it took slightly less than 160 days from the date the hearing request was made to the time the hearing was held. It is expected that all hearing requests will be heard within four to five months by the end of 2006. Given the notice requirements in the Workers' Compensation Act, which accounts for over sixty days of this time, the Commission is holding hearings as expeditiously as possible. By allocating more days for appellate hearings, the time required for the agency to hear an appeal also was considerably reduced, from four months to three months.

Commissioner J. Michele Childs resigned her position at the Commission following her election to circuit court. On May 24, 2006, she was elected by the South Carolina General Assembly to the position of Circuit Court Judge At-Large, Seat 9. She began her new duties Monday, August 14, 2006. her resignation from the Commission was effective August 13, 2006. Commissioner Childs was appointed to the Commission by Governor Jim Hodges to serve a six year term beginning July 1, 2002. Prior to coming to the Commission she was Deputy Director, Division of Labor at the South Carolina Department of Labor, Licensing and Regulation.

During this past year, several promotions and staffing changes took place. After 27 years of service with the Commission, Herman Lightsey, Director, Judicial Department, left the Commission to accept the position of Deputy Director, State Accident Fund. In March 2006, Ashley Jacobs was selected as its new Judicial Department Director. Also joining the Commission were Jennifer Neese, Executive Assistant/Ombudsman and Julie Lewis, Medical Services Director. Two long time employees were promoted to head their respective areas. Greg Line was promoted to Director, Claims Department and Tammie Brasfield was promoted to Director, Coverage Division.

The ongoing success of any organization is a direct and proximate result of the performance of its employees. For her achievements and accomplishments during FY 05-06, the Commission recognized Vivian Brown as its Employee of the Year. Ms. Brown has been a claims examiner in the Claims Department for a majority of her tenure with Commission. Other employees receiving recognition for outstanding contributions included: Kathryn Gantt, Administration, Mary Bates, Insurance & Medical Services, and Eugenia Hollman with the Commission's Judicial Department.

Commission employees routinely participate in community events. The Commission is a longtime supporter of the United Way, and our United Way Campaign during this fiscal year was a success.

The Commission works closely with a number of State agencies. For example, we exchange coverage information with the Employment Security Commission; serve as a satellite office of the Department of Vocational Rehabilitation; maintain established fraud reporting protocols with the Office of the State Attorney General; exchange workplace safety information with the Department of Labor; maintain direct data links to our claims database for the Uninsured Employers Fund and the Second Injury Fund; participate in joint fraud investigations and prosecutions with the FBI and the U.S. Office of the Attorney General; and provide information to the Social Security Administration.

When compared to other states, South Carolina has moderate workers' compensation benefits (neither high nor low) with relatively low insurance premium costs for employers. In national comparisons, both overall and within the manufacturing sector, South Carolina premium rates are consistently among the lowest in the country.

South Carolina must have a workers' compensation system that is stable, objectively balanced, competently managed and cost effective; one that provides a fair, equitable and timely system of benefits to injured workers and their employers. The South Carolina Workers' Compensation Commission is committed to such a system and will continue to that end as directed by the General Assembly.

WORKERS' COMPENSATION AND VOCATIONAL REHABILITATION

A cooperative arrangement between the Workers' Compensation Commission and the Vocational Rehabilitation Department exists to establish the means for a practical and effective working relationship between the two agencies and to provide maximum services to industrially injured, vocationally handicapped persons.

A Vocational Rehabilitation office, with a counselor and casework assistant, is located at the Workers' Compensation Commission to serve as liaison between the Vocational Rehabilitation Department and the Workers' Compensation Commission. This office not only provides services to injured workers, it also makes initial identifications and refers injured workers to vocational rehabilitation facilities throughout the state. These referrals are generated from Commission staff, commissioners, attorneys, insurance carriers, physicians, and others.

Among the chief advantages to the cooperative working arrangement is the opportunity to obtain early referral of injured workers so they can begin the rehabilitation process with the shortest time lapse between injury and re-employment. Referrals with first reports of injury and medical information are screened and assigned to the counselor in the area of the state where the claimant resides. In each instance, the receiving counselor is requested to supply a progress report within thirty days after the initial contact and to continue to report significant events.

The Vocational Rehabilitation Department places strong emphasis on providing services to injured workers, and the designated counselors facilitate the exchange of information and the delivery of rehabilitation services to workers' compensation recipients. Local vocational rehabilitation workshops are assessed for evaluation and adjustment training, and a network of statewide comprehensive facilities which specializes in a variety of rehabilitation services directed toward severely disabled clients is available.

As a result of these cooperative efforts, 383 referrals were made during Fiscal Year 2005-2006.

**LEGISLATION PASSED DURING THE 2006 GENERAL ASSEMBLY
WHICH AFFECTS THE
SOUTH CAROLINA WORKERS' COMPENSATION LAW**

Act No. 327
§42-3-25, §42-3-80
Effective 6/2/06

Provides for the executive director to be appointed by the commission, serve at its pleasure and receive an annual salary not to exceed eighty-five percent of the salary paid to commissioners. Also provides for the executive director to report to the chairman, be responsible to the commission and direct the operation of the commission's administrative department.

Act No. 411
Effective 3/29/06

Act 411 is a Joint Resolution to clarify the November 1, 2005 action of the State Budget and Control Board relating to the Second Injury Fund's assessment. The State Budget and Control Board requested that the Second Injury Fund make due immediately and payable only fifty percent of the amount assessed with the remaining fifty percent assessed only if and when the Budget and Control Board determined that fiscal year disbursements project a fund balance of less than \$50 million.

SOUTH CAROLINA WORKERS' COMPENSATION COMMISSION

Our Vision: Be the driving force in a workers' compensation system of excellence that delivers superior service to employers and their workers, thereby enhancing economic development in South Carolina.

Our Mission: Provide an equitable and timely system of benefits to injured workers and to employers in the most responsive, accurate, and reliable manner possible.

Commissioners:

Mission: Establish policies consistent with the mission of the organization and resolve or adjudicate all matters brought under the Workers' Compensation Act.

The Commission consists of seven members appointed by the Governor with the advice and consent of the Senate for terms of six years and until their successors are appointed and qualified. The Governor, with the advice and consent of the Senate, designates one commissioner as chairman for a term of two years, and the chairman may serve two terms in a six-year period, but not consecutively. The chairman is the chief executive officer of the Commission and responsible for implementing the policies established by the Commission in its capacity as the governing board.

The Commissioners are responsible for hearing and determining all contested cases, conducting informal conferences, approving settlements, and hearing appellant applications. In their capacity as administrative law judges, the Commissioners must conduct the legal proceedings in the county in which the claimant was injured. For administrative purposes, the State is divided into seven districts. Commissioners are assigned to a district for a period of two months before being reassigned to another district. During the course of a fourteen-month period, the Commissioners serve in each of the State's forty-six counties.

It is the responsibility of the Commission to administer the South Carolina Workers' Compensation Law, generally found in Title 42 of the Code of Laws of South Carolina. In accordance with the Administrative Procedures Act, the Commission also promulgates rules and regulations necessary to implement the provisions of Title 42.

Executive Director

Mission: Provide the leadership vital to accomplishing the organization's mission.

The day-to-day administration and operation of the Commission is the responsibility of the executive director who is appointed by, and serves at the pleasure of, the seven Commissioners acting in their capacity as the board of directors of the agency. The executive director functions as the Commission's chief operating officer.

Under the general supervision and management of the executive director are the Commission's six functional departments: (1) Administration, (2) Claims, (3) Insurance & Medical Services, (4)

Judicial, (5) Legal, and (6) Information Services. Each department is under the supervision of a director and is organized into one or more operational divisions.

Administration Department

Mission: Provide the administrative support necessary to enable employees to accomplish the organization's mission.

The Administration Department is responsible for a variety of internal programs, including finance, budgeting, human resources, purchasing, inventory, facility maintenance, motor vehicles, mail and printing, office services, and affirmative action, as well as administrative operations and decision making processes of the Commission.

Claims Department

Mission: Improve the timeliness and accuracy of benefits provided to injured workers.

The administration and management of accident reports and any resulting claims are responsibilities of the Claims Department. After an accident is reported to the Claims Department, its progress through the system is monitored at various stages by claims personnel. Individual case records are reviewed to ensure the requirements of the Workers' Compensation Act and the rules and regulations of the Commission are being observed. Conflicts of a non-judicial matter are often resolved in the Claims Department.

Insurance and Medical Services Department

Mission: Assure availability of workers' compensation benefits to injured workers, provide employers a self-insurance alternative, and contain medical costs.

The Department of Insurance and Medical Services is responsible for maintaining, monitoring, and enforcing the various requirements that employers obtain and maintain sufficient workers' compensation insurance coverage. The Coverage Division maintains insurance records of employers who purchase coverage from commercial insurance carriers. The responsibility for investigating uninsured employers to determine if they are subject to the Workers' Compensation Act is the responsibility of the Compliance Division. Under certain conditions, South Carolina employers may self-insure themselves against losses resulting from on-the-job injuries. Qualifying and regulating the self-insured employers is the responsibility of the Self-Insurance Division. The department's Medical Services Division is responsible for maintaining the fee schedules that regulate charges by doctors and hospitals and for approving various fees and charges in accordance with the established schedules.

Judicial Department

Mission: Assess and assign for disposition all claims that require mediation, adjudication, or appellate review.

The Judicial Department is responsible for scheduling contested matters and viewings before a commissioner and for scheduling appeals before an appellate panel of Commissioners. Case preparation in anticipation of a hearing consists of reviewing a file, requesting additional documentation from the parties, preparing a case summary, sending notices to the parties, and maintaining the docket. The Commission's claims mediation services also are a responsibility of the Judicial Department.

Information Services Department

Mission: Provide the necessary support to agency employees to enable them to accomplish the organization's mission.

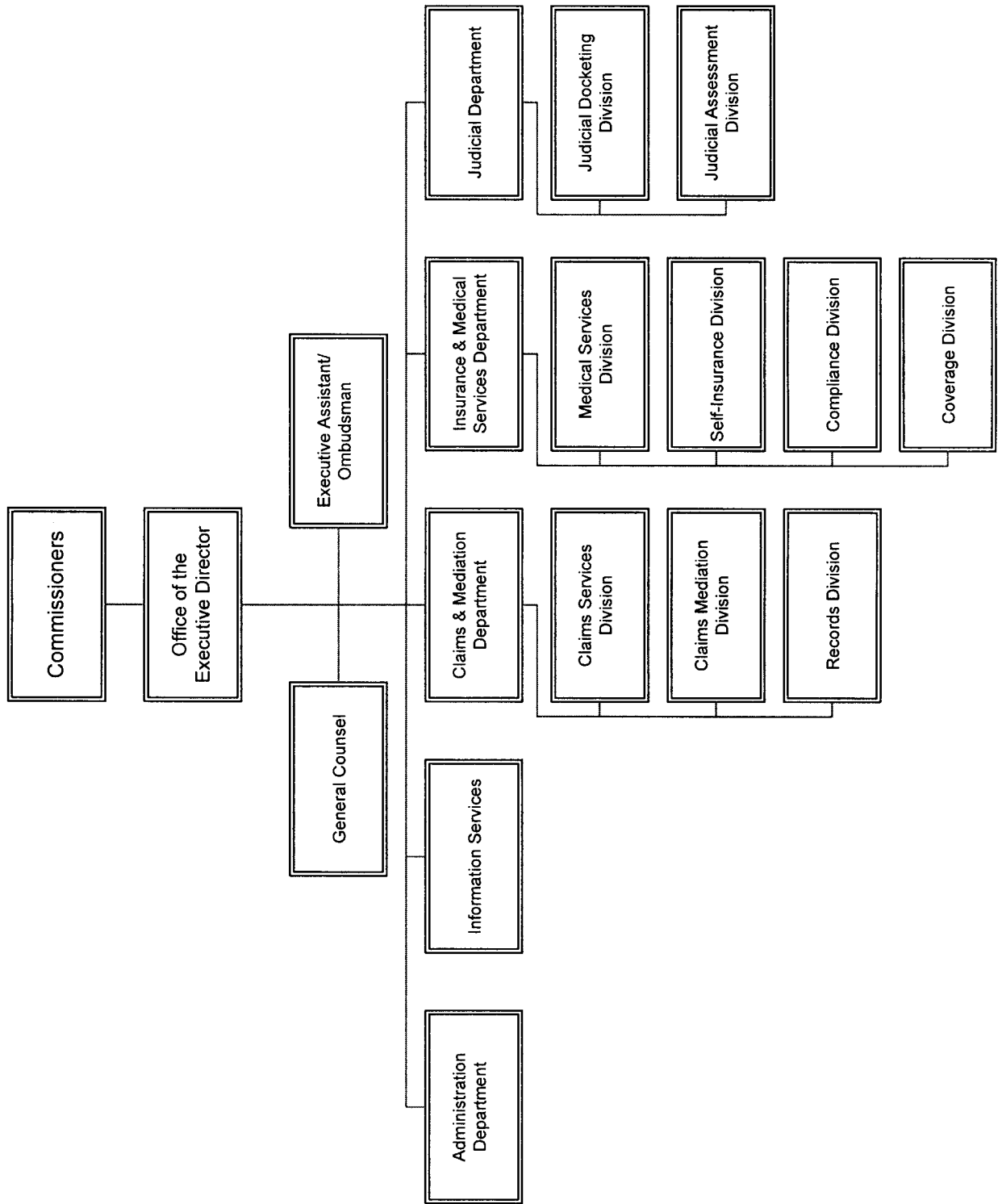
The Information Services Department is responsible for the use and management of information, data processing functions, research and statistics, and records, both electronic and manual. One of the primary goals of this department is to increase the availability, accuracy, timeliness, and the quality of data and information used in the delivery of services.

Legal Department

Mission: Provide legal counsel to the agency, prosecute uninsured employers, and draft changes to legislation and regulations.

The staff attorney serves as legal counsel and advisor to the Commission. In addition, the staff attorney brings show cause actions on behalf of the Commission, drafts proposed legislation and regulations, and monitors the legal and legislative developments in the field of workers' compensation.

South Carolina Workers' Compensation Commission



**SOUTH CAROLINA
WORKERS' COMPENSATION COMMISSION**

COMMISSIONERS

July 1, 2005 - June 30, 2006

David W. Huffstetler, Chairman

Lexington

Appointed: August 27, 2004

Term of Office: 2006

Lisa D. Glover, Vice Chair

Columbia

Appointed: June 5, 2000

Term of Office: 2006

J. Alan Bass

Myrtle Beach

Appointed: May 17, 2002

Term of Office: 2008

J. Michelle Childs

Columbia

Appointed: May 17, 2002

Term of Office: 2008

George N. Funderburk

Greenville

Appointed: May 17, 2002

Term of Office: 2008

G. Bryan Lyndon

Anderson

Appointed: April 10, 2004

Term of Office: 2010

Susan S. Barden

Columbia

Appointed: May 27, 2004

Term of Office: 2010

**SOUTH CAROLINA
WORKERS' COMPENSATION COMMISSION**

DEPARTMENT AND DIVISION DIRECTORS

As of June 30, 2006

EXECUTIVE DIRECTOR

Gary R. Thibault, Executive Director

ADMINISTRATION DEPARTMENT

Janice Sanders Sutton, Finance & Human Resources Director

Vacant, Administrative Services Manager

CLAIMS & MEDIATION DEPARTMENT

Greg Line, Director

Laverne Spry, Deputy Commissioner & Claims Mediator

Sallie Wider, Records Control Supervisor

INSURANCE AND MEDICAL SERVICES DEPARTMENT

Vacant, Director

W. C. Smith, Self-Insurance Director

Garry Smith, Compliance Director

Tammra Brasfield, Coverage Director

Julie Lewis, Medical Services Director

JUDICIAL DEPARTMENT

Ashley M. Jacobs, Director

Eugenia Hollmon, Judicial Docketing Director

INFORMATION RESOURCES MANAGEMENT

Matt Cleary, CIO

LEGAL DEPARTMENT

Janet Godfrey Griggs, General Counsel

**SOUTH CAROLINA
WORKERS' COMPENSATION COMMISSION**

FINANCIAL STATEMENT

FISCAL YEAR 2005-06

| ACCOUNTS | APPROPRIATION | EXPENDITURES | BALANCE |
|--|----------------------|---------------------|----------------|
| <u>ADMINISTRATION</u> | | | |
| Director | 99,399 | 81,877 | 17,522 |
| Classified Positions | 404,948 | 375,114 | 29,834 |
| Terminal Leave | 2,000 | 1,701 | 299 |
| Contractual Services | 2,567 | 2,341 | 226 |
| Supplies & Materials | 0 | 0 | 0 |
| Fixed Charges & Contributions | 0 | 0 | 0 |
| Travel | 0 | 0 | 0 |
| Equipment | 0 | 0 | 0 |
| Total Administration | 508,914 | 461,033 | 47,881 |
| <u>JUDICIAL</u> | | | |
| <u>A. COMMISSIONERS</u> | | | |
| Chairman | 108,174 | 108,174 | 0 |
| Commissioners | 620,244 | 620,244 | 0 |
| Classified Positions | 285,144 | 284,104 | 1,040 |
| Terminal Leave | 20,000 | 0 | 20,000 |
| Contractual Services | 6,398 | 6,048 | 350 |
| Supplies & Materials | 3,696 | 3,696 | 0 |
| Fixed Charges & Contributions | 0 | 0 | 0 |
| Travel | 8,549 | 8,549 | 0 |
| Total Commissioners | 1,052,205 | 1,030,815 | 21,390 |
| <u>B. MANAGEMENT</u> | | | |
| Classified Positions | 129,980 | 96,551 | 33,429 |
| Unclass. Positions | 4,962 | 4,962 | 0 |
| Terminal Leave | 0 | 0 | 0 |
| Contractual Services | 0 | 0 | 0 |
| Supplies & Materials | 0 | 0 | 0 |
| Fixed Charges & Contributions | 0 | 0 | 0 |
| Total Management | 134,942 | 101,513 | 33,429 |
| <u>INSURANCE & MEDICAL SERVICES</u> | | | |
| Classified Positions | 320,758 | 231,674 | 89,084 |
| Terminal Leave | 785 | 785 | 0 |
| Contractual Services | 6,780 | 611 | 6,169 |
| Fixed Charges & Contributions | 0 | 0 | 0 |
| Travel | 0 | 0 | 0 |
| Total Ins. & Med. Svc | 328,323 | 233,070 | 95,253 |

| ACCOUNTS | APPROPRIATION | EXPENDITURES | BALANCE |
|---------------------------------|-------------------------|-------------------------|-----------------------|
| <u>CLAIMS</u> | | | |
| Classified Positions | 257,375 | 257,375 | 0 |
| Unclassified Position | 54,583 | 54,583 | 0 |
| Contractual Services | 2,340 | 200 | 2,140 |
| Supplies & Materials | 0 | 0 | 0 |
| Fixed Charges & Contributions | 0 | 0 | 0 |
| Total Claims | <u>314,298</u> | <u>312,158</u> | <u>2,140</u> |
| <u>EMPLOYEE BENEFITS</u> | | | |
| Employer Contributions | 624,900 | 583,047 | 41,853 |
| Total Employee Benefits | <u>624,900</u> | <u>583,047</u> | <u>41,853</u> |
| TOTAL APPROPRIATION | <u><u>2,963,582</u></u> | <u><u>2,721,636</u></u> | <u><u>241,946</u></u> |
| <u>OTHER FUNDS</u> | | | |
| <u>ADMINISTRATION</u> | | | |
| Classified Positions | 78,150 | 72,674 | 5,476 |
| Temporary Positions | 25,540 | 25,540 | 0 |
| Contractual Services | 121,793 | 121,793 | 0 |
| Supplies & Materials | 115,882 | 115,882 | 0 |
| Fixed Charges & Contributions | 221,619 | 221,619 | 0 |
| Travel | 43,081 | 43,081 | 0 |
| Equipment | 3,414 | 3,414 | 0 |
| Taxes | 11,701 | 11,701 | 0 |
| Equipment Non-Capital | 13,000 | -66,712 | 79,712 |
| Total Administration | <u>634,180</u> | <u>548,992</u> | <u>85,188</u> |
| <u>A. COMMISSIONERS</u> | | | |
| Taxable Subsistence | 40,195 | 27,190 | 13,005 |
| Classified Positions | 0 | 0 | 0 |
| Temporary Positions | 0 | 0 | 0 |
| Contractual Services | 132,805 | 132,805 | 0 |
| Supplies & Materials | 1,182 | 1,182 | 0 |
| Fixed Charges & Contr. | 134,422 | 129,457 | 4,965 |
| Travel | 79,367 | 79,367 | 0 |
| Transportation | 32 | 32 | 0 |
| Total Commissioners | <u>388,003</u> | <u>370,033</u> | <u>17,970</u> |
| <u>B. MANAGEMENT</u> | | | |
| Classified Positions | 188,726 | 188,726 | 0 |
| Temporary Positions | 26,959 | 26,959 | 0 |
| Contractual Services | 10,387 | 5,096 | 5,291 |
| Supplies & Materials | 0 | 0 | 0 |

| ACCOUNTS | APPROPRIATION | EXPENDITURES | BALANCE |
|--|------------------|------------------|----------------|
| Fixed Charges & Contr. | 48,462 | 48,462 | 0 |
| Travel | 1,296 | 1,296 | 0 |
| Total Management | <u>275,830</u> | <u>270,539</u> | <u>5,291</u> |
| <u>INSURANCE & MEDICAL SERVICES</u> | | | |
| Classified Positions | 130,830 | 130,830 | 0 |
| Temporary Positions | 13,767 | 13,767 | 0 |
| Contractual Services | 6,734 | 6,734 | 0 |
| Supplies & Materials | 13,066 | 13,066 | 0 |
| Fixed Charges & Contribution | 55,898 | 55,898 | 0 |
| Travel | 8,422 | 8,422 | 0 |
| Taxes | 666 | 666 | 0 |
| Equipment Non-Capital | 0 | 0 | 0 |
| Total Ins. & Med. Svc | <u>229,383</u> | <u>229,383</u> | <u>0</u> |
| <u>CLAIMS</u> | | | |
| Classified Positions | 64,882 | 64,882 | 0 |
| Temporary Positions | 38,884 | 38,884 | 0 |
| Contractual Services | 9,892 | 9,892 | 0 |
| Supplies & Materials | 13,553 | 13,553 | 0 |
| Fixed Charges & Contribution | 103,621 | 103,621 | 0 |
| Travel | 1,648 | 1,636 | 12 |
| Total Claims | <u>232,480</u> | <u>232,468</u> | <u>12</u> |
| <u>EMPLOYEE BENEFITS</u> | | | |
| Employer Contributions | 140,124 | 140,124 | 0 |
| Total Employee Benefits | <u>140,124</u> | <u>140,124</u> | <u>0</u> |
| <u>COMPUTER DATABASE</u> | | | |
| Contractual Services | 430,289 | 430,289 | 0 |
| Supplies & Materials | 40,965 | 40,965 | 0 |
| Fix Charges & Contributions | 373 | 373 | 0 |
| Equipment | 177,241 | 177,241 | 0 |
| Total Computer Database | <u>648,868</u> | <u>648,868</u> | <u>0</u> |
| TOTAL OTHER FUNDS | <u>2,548,868</u> | <u>2,440,407</u> | <u>108,461</u> |
| TOTAL AGENCY | <u>5,512,450</u> | <u>2,721,636</u> | <u>350,407</u> |
| Appropriation of Remaining Cash Balance For FY04-05 | | | <u>241,946</u> |

OTHER FUNDS RETAINED

| | RECEIPTS | EXPENDITURES | BALANCE |
|--------------------------|------------------|------------------|------------------|
| Penalties, Fees, Fines * | 4,499,643 | 1,781,853 | 2,717,790 |
| Training, Conference ** | 15,736 | 8,432 | 7,304 |
| Sale of Publications *** | 102,921 | 1,253 | 101,668 |
| Capital Reserve Fund | 886,180 | 648,868 | 237,312 |
| Total Other Funds | <u>5,504,480</u> | <u>2,440,406</u> | <u>3,064,074</u> |

OTHER FUNDS - GENERAL FUNDS

| | | | |
|---------------------------------------|------------------|----------|------------------|
| Workers' Comp. Self- Insurance Tax | 5,907,590 | 0 | 5,907,590 |
| Insolvency Fund | -836,940 | 0 | -836,940 |
| Self-Insurance Application Fee | 6,548 | 0 | 6,548 |
| Miscellaneous Revenue | 104 | 0 | 104 |
| Total Funds | <u>5,077,302</u> | <u>0</u> | <u>5,077,302</u> |

* Receipts include \$2,533,751 carried forward from FY 2005

** Receipts include \$1,119 carried forward from FY 2005

*** Receipts include \$92,546 carried forward from FY 2005

ACTIVITY SUMMARY & STATISTICAL ABSTRACT

The following tables and charts illustrate the work activity of the Workers' Compensation Commission for FY 2005 - 2006. Activity is measured primarily by the number of cases handled at each stage in the system. Once an accident is reported, there are a number of steps that must be taken before a claim can be closed. The most serious accidents and those that are disputed require additional processing and are open for a longer period of time.

South Carolina continues to be among those states with the lowest rates in the country for workers' compensation insurance. We have been fortunate to be in this position for a number of years now, and making this even more significant is the fact our workers' compensation benefits are relatively moderate, neither high nor low when compared to other states.

According to the 2004 Workers' Compensation Premium Rate Ranking conducted by the Oregon Department of Consumer & Business Services, South Carolina employers in the voluntary market pay, on average, the 13th lowest rates in the nation. Other rate studies have confirmed this finding. Actuarial and Technical Solutions of New York found South Carolina had the tenth lowest workers' compensation costs in the nation among firms in the manufacturing industry.

The number of employers purchasing workers' compensation insurance increased 2.1% from 96,504 to 98,546. The number of employers self-insured, individually and through self-insured funds, decreased 8.1% from 4,694 to 4,312, primarily as a result of fewer members of self-insured funds. Self-insurance taxes collected increased 6.5%, from \$5.6 to \$5.9 million.

In FY 2005-2006, 76,715 accidents were filed with the Commission, down 12.3% from 87,441 filed the previous year. Individually reported accidents decreased 19.3% from 35,267 to 28,454 after having increased 20.4% the previous year. The number of minor medical only cases decreased 19.5%, from 56,623 to 45,561.

After having increase 19.5% in 2004-2005, total compensation and medical paid on cases closed last year increased 5.2% to \$771,537,200. Medical costs rose 8.6% to \$311,193,076 with compensation costs increasing 3.2% to \$500,586,866. The increase in medical costs can be attributed to medical inflation as well as greater utilization of services per case. Compensation costs were impacted by a 4% increase in the average weekly wage mitigated by a decrease in the number of cases closed during the year.

The vast majority of workers' compensation claims are processed and resolved with the injured employee receiving timely and appropriate medical care and returning to work with little or no time lost from work. Even the majority of the remainder of the more complex cases are resolved between the parties. Of the 76,715 cases filed with the Commission during the past fiscal year, 11,400, 14.9%, requested a hearing to resolve a dispute between the parties. Of the 11,400 hearings scheduled, 2,632 hearings were held, an 8.7% decrease from the previous year. Overall, 2,802 single commissioner decisions, opinions and orders were released. In FY 2005 - 2006, 4,956 informal conferences were held, a 2.2% decrease, and 9,769 common law settlements approved, relatively unchanged from the year before. Cases appealed to the Full Commission for review increased 46% to 1,600, and decisions appealed to Circuit Court increased by 26.2% to 246.

Recapitulation

| | 2003-2004 | 2004-2005 | 2005-2006 |
|---|---------------|---------------|---------------|
| 1. Number of Employers Purchasing Insurance | 92,651 | 96,504 | 98,546 |
| 2. Number of Employers Qualifying as Self-Insurers | 4,710 | 4,694 | 4,312 |
| 3. Investigations Active Beginning of Fiscal Year | 309 | 213 | 160 |
| 4. Investigations Initiated | 800 | 760 | 871 |
| 5. Investigations Set for Show Cause Hearings/ Consent Agreements Received | 372 | 391 | 405 |
| 6. Total Investigations Closed | 896 | 813 | 824 |
| 7. Investigations Active at Close of Fiscal Year | 213 | 160 | 207 |
| 8. Number of Accident Cases Filed with the Commission | 88,625 | 87,441 | 76,715 |
| A. New Cases | 86,617 | 85,077 | 74,321 |
| B. Reopened cases | 2,008 | 2,364 | 2,394 |
| 9. Number of Cases Closed during Fiscal Year | 87,991 | 91,890 | 74,015 |
| A. Individually Reported Accidents | 29,300 | 35,267 | 28,454 |
| B. Minor Medical Only Accidents Reported in Summary | 58,691 | 56,623 | 45,561 |
| 10. Total Compensation & Medical Cost Paid on Closed Cases | \$645,579,071 | \$771,537,200 | \$811,779,942 |
| A. Medical Costs | \$234,362,277 | \$286,467,000 | \$311,193,076 |
| B. Compensation | \$411,216,794 | \$485,070,200 | \$500,586,866 |
| 11. Temporary Total Compensation Agreements | 14,726 | 14,207 | 14,831 |
| 12. Supplemental Compensation Agreements | 8,853 | 8,207 | 8,066 |
| 13. Applications for Stop Payment * | 3,462 | 3,093 | 2,984 |
| 14. Cases Docketed for Hearings | 11,287 | 14,335 | 11,400 |
| 15. Cases Assigned for Informal Conferences | 5,911 | 5,680 | 5,456 |
| 16. Hearings Conducted by Single Commissioners | 2,694 | 2,882 | 2,632 |
| 17. Informal Conferences Conducted | 5,134 | 5,066 | 4,956 |
| 18. Decisions, Opinions & Orders, Single Commissioners | 2,502 | 2,762 | 2,802 |
| 19. Cases Appealed to Full Commission for Review | 965 | 1,094 | 1,600 |
| 20. Reviews Conducted by Full Commission or Panel | 870 | 820 | 868 |
| 21. Decisions and Opinions by Full Commission or Panel | 631 | 748 | 642 |
| 22. Commission Decisions Appealed to Circuit Court | 262 | 195 | 246 |
| 23. Common Law Settlements | 9,275 | 9,834 | 9,769 |
| 24. Attorney Fee Approvals | 10,299 | 10,737 | 10,688 |
| 25. Self-Insurance Tax Collected and Deposited to the General Fund | \$5,180,134 | \$5,555,236 | \$5,914,523 |

* Includes 60-Day Hearings

AGGREGATED BENEFITS - FY 1935 THROUGH FY 2006

This chart reports the number of cases closed per fiscal year and the amount of compensation and medical expenses paid.

| <u>Fiscal Year</u> | <u>Cases</u> | <u>Compensation</u> | <u>Medical</u> |
|--------------------|--------------|---------------------|----------------|
| 1934-35..... | 11,458 | \$ 250,577 | \$ 170,670 |
| 1939-40..... | 25,994 | \$ 394,223 | \$ 405,019 |
| 1944-45..... | 36,864 | \$ 1,358,293 | \$ 474,681 |
| 1949-50..... | 35,667 | \$ 1,755,179 | \$ 912,597 |
| 1954-55..... | 44,035 | \$ 3,275,755 | \$ 1,573,474 |
| 1959-60..... | 43,884 | \$ 5,072,006 | \$ 2,608,076 |
| 1964-65..... | 59,725 | \$ 6,768,829 | \$ 3,828,226 |
| 1965-66..... | 65,365 | \$ 6,867,203 | \$ 4,278,421 |
| 1966-67..... | 69,297 | \$ 7,704,629 | \$ 4,407,379 |
| 1967-68..... | 64,915 | \$ 9,655,456 | \$ 5,101,658 |
| 1968-69..... | 73,013 | \$ 9,615,519 | \$ 5,677,654 |
| 1969-70..... | 80,293 | \$ 10,738,366 | \$ 6,289,786 |
| 1970-71..... | 72,379 | \$ 11,201,101 | \$ 6,964,646 |
| 1971-72..... | 83,273 | \$ 11,527,419 | \$ 7,634,332 |
| 1972-73..... | 79,597 | \$ 11,792,332 | \$ 9,012,884 |
| 1974-75..... | 93,591 | \$ 18,289,965 | \$ 10,493,286 |
| 1975-76..... | 83,366 | \$ 20,351,297 | \$ 11,038,204 |
| 1976-77..... | 88,388 | \$ 23,362,924 | \$ 10,464,476 |
| 1977-78..... | 101,938 | \$ 33,263,746 | \$ 16,111,918 |
| 1978-79..... | 111,739 | \$ 40,421,561 | \$ 18,771,706 |
| 1979-80..... | 114,459 | \$ 47,077,247 | \$ 21,878,795 |
| 1980-81..... | 120,216 | \$ 54,637,463 | \$ 25,995,462 |
| 1981-82..... | 111,400 | \$ 61,695,438 | \$ 29,252,885 |
| 1982-83..... | 98,632 | \$ 69,970,953 | \$ 31,990,075 |
| 1983-84..... | 80,172 | \$ 73,003,062 | \$ 33,776,506 |
| 1984-85..... | 81,925 | \$ 68,180,229 | \$ 35,485,599 |
| 1985-86..... | 88,521 | \$ 96,422,558 | \$ 47,820,349 |
| 1986-87..... | 115,128 | \$137,045,282 | \$ 66,854,808 |
| 1987-88..... | 112,247 | \$120,649,315 | \$ 66,740,699 |
| 1988-89..... | 102,630 | \$164,599,203 | \$ 78,849,921 |
| 1989-90..... | 129,951 | \$176,323,354 | \$ 91,160,407 |
| 1990-91..... | 113,143 | \$187,827,035 | \$ 99,556,117 |
| 1991-92..... | 103,695 | \$213,342,923 | \$119,931,934 |
| 1992-93..... | 116,593 | \$236,374,239 | \$135,846,583 |
| 1993-94..... | 143,167 | \$295,903,349 | \$177,061,906 |
| 1994-95..... | 137,004 | \$223,564,528 | \$142,896,705 |
| 1995-96..... | 105,874 | \$233,868,938 | \$149,644,830 |
| 1996-97..... | 93,709 | \$250,579,855 | \$150,574,664 |
| 1997-98..... | 93,551 | \$237,017,627 | \$147,749,239 |
| 1998-99..... | 120,128 | \$253,371,802 | \$162,104,819 |
| 1999-2000..... | 65,658 | \$278,849,036 | \$164,957,331 |
| 2000-2001..... | 92,555 | \$316,041,961 | \$186,702,667 |
| 2001-2002..... | 88,891 | \$327,510,789 | \$199,210,160 |
| 2002-2003..... | 88,913 | \$359,713,537 | \$211,908,560 |
| 2003-2004..... | 87,991 | \$411,216,794 | \$204,934,938 |
| 2004-2005..... | 91,890 | \$485,070,200 | \$286,467,000 |
| 2005-2006..... | 74,015 | \$500,586,866 | \$311,193,076 |

COMPENSATION RATES

The General Assembly is responsible for establishing compensation rates. The table below illustrates the change in both weekly and maximum compensation since 1975.

| <u>EFFECTIVE DATE</u> | <u>PERCENTAGE</u> | <u>MAXIMUM WEEKLY RATE</u> | <u>MAXIMUM COMPENSATION</u> |
|-----------------------|--------------------|----------------------------|-----------------------------|
| January 1, 1975 | 66 $\frac{2}{3}$ % | \$ 91.17 | \$ 40,000.00 |
| July 1, 1975 | 66 $\frac{2}{3}$ % | \$ 95.35 | \$ 40,000.00 |
| April 14, 1976 | 66 $\frac{2}{3}$ % | \$ 147.44 | \$ 40,000.00 |
| January 1, 1977 | 66 $\frac{2}{3}$ % | \$ 160.00 | \$ 40,000.00 |
| January 1, 1978 | 66 $\frac{2}{3}$ % | \$ 172.00 | \$ 40,000.00 |
| May 19, 1978 | 66 $\frac{2}{3}$ % | \$ 172.00 | 500 Weeks |
| January 1, 1979 | 66 $\frac{2}{3}$ % | \$ 185.00 | 500 Weeks |
| January 1, 1980 | 66 $\frac{2}{3}$ % | \$ 197.00 | 500 Weeks |
| January 1, 1981 | 66 $\frac{2}{3}$ % | \$ 216.00 | 500 Weeks |
| January 1, 1982 | 66 $\frac{2}{3}$ % | \$ 235.00 | 500 Weeks |
| January 1, 1983 | 66 $\frac{2}{3}$ % | \$ 254.38 | 500 Weeks |
| January 1, 1984 | 66 $\frac{2}{3}$ % | \$ 268.99 | 500 Weeks * |
| January 1, 1985 | 66 $\frac{2}{3}$ % | \$ 287.02 | 500 Weeks |
| January 1, 1986 | 66 $\frac{2}{3}$ % | \$ 294.95 | 500 Weeks |
| January 1, 1987 | 66 $\frac{2}{3}$ % | \$ 308.24 | 500 Weeks |
| January 1, 1988 | 66 $\frac{2}{3}$ % | \$ 319.20 | 500 Weeks |
| January 1, 1989 | 66 $\frac{2}{3}$ % | \$ 334.87 | 500 Weeks |
| January 1, 1990 | 66 $\frac{2}{3}$ % | \$ 350.19 | 500 Weeks |
| January 1, 1991 | 66 $\frac{2}{3}$ % | \$ 364.37 | 500 Weeks |
| January 1, 1992 | 66 $\frac{2}{3}$ % | \$ 379.82 | 500 Weeks |
| January 1, 1993 | 66 $\frac{2}{3}$ % | \$ 393.06 | 500 Weeks |
| January 1, 1994 | 66 $\frac{2}{3}$ % | \$ 410.26 | 500 Weeks |
| January 1, 1995 | 66 $\frac{2}{3}$ % | \$ 422.48 | 500 Weeks |
| January 1, 1996 | 66 $\frac{2}{3}$ % | \$ 437.79 | 500 Weeks |
| January 1, 1997 | 66 $\frac{2}{3}$ % | \$ 450.62 | 500 Weeks |
| January 1, 1998 | 66 $\frac{2}{3}$ % | \$ 465.18 | 500 Weeks |
| January 1, 1999 | 66 $\frac{2}{3}$ % | \$ 483.47 | 500 Weeks |
| January 1, 2000 | 66 $\frac{2}{3}$ % | \$ 507.34 | 500 Weeks |
| January 1, 2001 | 66 $\frac{2}{3}$ % | \$ 532.77 | 500 Weeks |
| January 1, 2002 | 66 $\frac{2}{3}$ % | \$ 549.42 | 500 Weeks |
| January 1, 2003 | 66 $\frac{2}{3}$ % | \$ 563.55 | 500 Weeks |
| January 1, 2004 | 66 $\frac{2}{3}$ % | \$ 577.73 | 500 Weeks |
| January 1, 2005 | 66 $\frac{2}{3}$ % | \$ 592.56 | 500 Weeks |
| January 1, 2006 | 66 $\frac{2}{3}$ % | \$ 616.48 | 500 Weeks |

* Effective May 31, 1984, (Act No. 417), "Any person determined to be totally and permanently disabled who as a result of a compensable injury is a paraplegic, a quadriplegic, or who has suffered physical brain damage is not subject to the five hundred week limitation and shall receive such benefits for life." (Section 42-9-10, as amended)

CASES ASSIGNED FOR HEARINGS AND INFORMAL CONFERENCES

| County | Hearings | | | | | Informal Conferences | | | | |
|---------------|-----------|-----------|-----------|-----------|-----------|----------------------|-----------|-----------|-----------|-----------|
| | 2001-2002 | 2002-2003 | 2003-2004 | 2004-2005 | 2005-2006 | 2001-2002 | 2002-2003 | 2003-2004 | 2004-2005 | 2005-2006 |
| Abbeville | 39 | 38 | 37 | 41 | 27 | 29 | 31 | 28 | 23 | 18 |
| Aiken | 254 | 248 | 249 | 287 | 220 | 147 | 155 | 162 | 152 | 132 |
| Allendale | 30 | 22 | 27 | 42 | 24 | 22 | 9 | 14 | 18 | 8 |
| Anderson | 445 | 447 | 446 | 472 | 364 | 305 | 227 | 218 | 248 | 199 |
| Bamberg | 35 | 15 | 13 | 23 | 25 | 34 | 13 | 17 | 19 | 17 |
| Barnwell | 46 | 51 | 35 | 45 | 43 | 26 | 12 | 13 | 13 | 15 |
| Beaufort | 354 | 335 | 359 | 388 | 351 | 162 | 188 | 200 | 161 | 149 |
| Berkeley | 232 | 193 | 261 | 276 | 246 | 148 | 139 | 169 | 137 | 131 |
| Calhoun | 20 | 26 | 27 | 23 | 12 | 8 | 13 | 9 | 7 | 14 |
| Charleston | 1,037 | 1011 | 1,222 | 1,235 | 507 | 659 | 642 | 581 | 518 | 460 |
| Cherokee | 131 | 147 | 121 | 152 | 114 | 116 | 127 | 113 | 88 | 77 |
| Chester | 110 | 91 | 100 | 84 | 80 | 50 | 66 | 51 | 45 | 36 |
| Chesterfield | 78 | 90 | 104 | 82 | 79 | 51 | 71 | 60 | 54 | 65 |
| Clarendon | 60 | 70 | 67 | 69 | 69 | 17 | 26 | 19 | 24 | 23 |
| Colleton | 84 | 119 | 86 | 103 | 92 | 66 | 62 | 58 | 54 | 32 |
| Darlington | 114 | 120 | 107 | 104 | 102 | 68 | 80 | 62 | 52 | 38 |
| Dillon | 37 | 29 | 35 | 45 | 46 | 19 | 37 | 26 | 23 | 14 |
| Dorchester | 159 | 166 | 202 | 243 | 778 | 146 | 120 | 111 | 131 | 110 |
| Edgefield | 24 | 21 | 31 | 29 | 29 | 18 | 23 | 6 | 11 | 15 |
| Fairfield | 59 | 64 | 74 | 52 | 51 | 40 | 34 | 23 | 34 | 25 |
| Florence | 296 | 349 | 377 | 332 | 302 | 194 | 208 | 192 | 185 | 201 |
| Georgetown | 178 | 129 | 204 | 252 | 157 | 148 | 141 | 120 | 99 | 74 |
| Greenville | 1,210 | 1214 | 1,141 | 1,326 | 1,241 | 894 | 879 | 851 | 802 | 783 |
| Greenwood | 175 | 145 | 125 | 149 | 155 | 140 | 133 | 136 | 116 | 96 |
| Hampton | 31 | 38 | 36 | 54 | 45 | 34 | 39 | 33 | 43 | 23 |
| Horry | 534 | 540 | 537 | 518 | 466 | 274 | 255 | 244 | 266 | 261 |
| Jasper | 33 | 32 | 27 | 59 | 36 | 13 | 11 | 8 | 7 | 24 |
| Kershaw | 117 | 111 | 119 | 155 | 117 | 58 | 101 | 94 | 61 | 52 |
| Lancaster | 86 | 95 | 58 | 96 | 91 | 78 | 77 | 65 | 58 | 38 |
| Laurens | 132 | 167 | 120 | 119 | 132 | 83 | 77 | 63 | 74 | 86 |
| Lee | 28 | 29 | 23 | 42 | 31 | 17 | 13 | 13 | 8 | 13 |
| Lexington | 434 | 470 | 505 | 500 | 474 | 420 | 300 | 349 | 331 | 269 |
| McCormick | 13 | 21 | 17 | 19 | 10 | 7 | 19 | 6 | 5 | 5 |
| Marion | 54 | 41 | 48 | 68 | 41 | 29 | 37 | 30 | 22 | 25 |
| Marlboro | 35 | 42 | 54 | 33 | 38 | 31 | 21 | 28 | 33 | 34 |
| Newberry | 58 | 78 | 70 | 95 | 81 | 67 | 86 | 59 | 76 | 85 |
| Oconee | 150 | 144 | 147 | 169 | 131 | 135 | 122 | 97 | 113 | 93 |
| Orangeburg | 222 | 231 | 221 | 242 | 44 | 152 | 113 | 149 | 88 | 108 |
| Pickens | 204 | 190 | 173 | 189 | 185 | 159 | 170 | 149 | 125 | 120 |
| Richland | 934 | 866 | 983 | 968 | 883 | 681 | 558 | 515 | 570 | 505 |
| Saluda | 24 | 17 | 12 | 16 | 16 | 12 | 13 | 6 | 9 | 5 |
| Spartanburg | 646 | 680 | 662 | 796 | 602 | 461 | 434 | 384 | 402 | 319 |
| Sumter | 291 | 277 | 239 | 277 | 378 | 164 | 181 | 146 | 141 | 120 |
| Union | 36 | 37 | 44 | 50 | 142 | 37 | 41 | 31 | 18 | 25 |
| Williamsburg | 42 | 32 | 50 | 60 | 31 | 39 | 21 | 27 | 35 | 25 |
| York | 338 | 317 | 296 | 318 | 282 | 195 | 180 | 176 | 181 | 171 |
| TOTALS | 9,649 | 9,595 | 9,891 | 10,697 | 9,370 | 6,653 | 6,305 | 5,911 | 5,680 | 5,138 |

SOUTH CAROLINA WORKERS' COMPENSATION COMMISSION
 NUMBER AND COST OF DISABILITY BY INDUSTRY GROUP FOR CASES CLOSED FROM 07/01/05 THRU 06/30/06

| | # INC | COMP | MEDICAL | ---DISFIGUREMENT--- | # INC | COMP | ---DISMEMBERMENT--- | # INC | COMP | LOSS OF USE AND -PERMANENT PARTIAL- | # INC | COMP | ---TEMPORARY COMP | # INC | COMP | TOTAL | |
|-----------------------------|-------|------------|-----------|---------------------|-------|---------|---------------------|-------|------------|--|-------|------------|----------------------|--------|-------------|-------|-------------|
| AGRICULTURE | 1 | 29,922 | 604 | | 1 | 12,928 | | 19 | 133,346 | | 19 | 133,346 | | 79 | 663,196 | | 848,162 |
| MINING-QUARRYING | | | | | | | | | | | | | | 1 | 658 | | 4,123 |
| BUILDING CONSTRUCTION | 4 | 431,505 | 24,139 | | 1 | 12,928 | | 58 | 826,552 | | 58 | 826,552 | | 237 | 4,132,012 | | 8,143,616 |
| ROAD CONSTRUCTION | 2 | 245,149 | 23,230 | | | | | 5 | 119,168 | | 5 | 119,168 | | 38 | 479,682 | | 816,214 |
| SPECIAL TRADE CONSTRUCTION | 9 | 1,090,223 | 1,117 | | 5 | 9,760 | | 94 | 1,159,074 | | 94 | 1,159,074 | | 310 | 5,287,471 | | 7,997,471 |
| FOOD | 2 | 127,681 | 9,360 | | 5 | 14,070 | | 54 | 652,450 | | 54 | 652,450 | | 170 | 1,527,893 | | 3,274,925 |
| TEXTILE MILLS | 5 | 615,266 | 13,360 | | 4 | 40,233 | | 65 | 1,105,951 | | 65 | 1,105,951 | | 95 | 1,441,410 | | 2,600,905 |
| CLOTHING MANUFACTURING | | | | | 1 | 4,044 | | 5 | 50,249 | | 5 | 50,249 | | 10 | 111,858 | | 203,279 |
| LUMBER AND WOOD | 3 | 285,572 | 29,034 | | 4 | 9,571 | | 38 | 384,693 | | 38 | 384,693 | | 102 | 1,295,950 | | 2,038,391 |
| FURNITURE MANUFACTURING | | | | | | | | 5 | 84,019 | | 5 | 84,019 | | 14 | 199,050 | | 209,476 |
| PAPER-PULP MILLS | | | | | 3 | 29,897 | | 7 | 113,112 | | 7 | 113,112 | | 25 | 425,414 | | 667,047 |
| PRINTING PUBLISHING | | | | | | | | 7 | 64,731 | | 7 | 64,731 | | 10 | 188,841 | | 360,076 |
| CHEMICALS & ALLIED | 1 | 68,901 | | | 10 | 42,568 | | 29 | 387,048 | | 29 | 387,048 | | 56 | 821,183 | | 1,174,690 |
| PETROLEUM REFINING | | | | | 4 | 4,458 | | 10 | 141,577 | | 10 | 141,577 | | 37 | 274,377 | | 499,516 |
| RUBBER-PLASTIC PRODUCTS | 2 | 229,836 | 27,236 | | 4 | 13,687 | | 36 | 550,235 | | 36 | 550,235 | | 58 | 837,132 | | 1,254,763 |
| STONE GLASS CLAY CONCRETE | | | | | 2 | 6,067 | | 32 | 334,549 | | 32 | 334,549 | | 64 | 1,062,333 | | 1,224,228 |
| METAL INDUSTRY | | | | | 10 | 26,660 | | 28 | 311,471 | | 28 | 311,471 | | 63 | 852,801 | | 1,106,240 |
| FABRICATED METAL PRODUCTS | 1 | 221,400 | | | 2 | 1,190 | | 21 | 295,459 | | 21 | 295,459 | | 49 | 952,496 | | 1,558,274 |
| MACHINERY INSTALLATION | | | | | | | | 16 | 151,215 | | 16 | 151,215 | | 29 | 530,299 | | 613,741 |
| ELECTRICAL MACHINERY | | | | | 1 | 4,953 | | 15 | 325,877 | | 15 | 325,877 | | 19 | 426,090 | | 397,420 |
| TRANSPORT. REPAIR & MFG. | | | | | 3 | 6,327 | | 62 | 903,677 | | 62 | 903,677 | | 105 | 1,008,275 | | 1,069,216 |
| MISCELLANEOUS MANUFACTURING | 3 | 536,687 | | | 20 | 40,541 | | 190 | 2,661,606 | | 190 | 2,661,606 | | 273 | 3,948,198 | | 5,222,855 |
| TRANSPORTATION | 2 | 250,075 | | | 1 | 187 | | 14 | 339,545 | | 14 | 339,545 | | 69 | 738,105 | | 1,445,727 |
| MOTOR FREIGHT | 3 | 582,915 | | | 5 | 19,394 | | 79 | 1,357,338 | | 79 | 1,357,338 | | 213 | 3,557,761 | | 3,906,439 |
| COMMUNICATION | 1 | 246,216 | 3,497 | | | | | 19 | 280,563 | | 19 | 280,563 | | 39 | 330,427 | | 849,871 |
| ELECTRIC LIGHT & POWER | 1 | 82,611 | | | 2 | 3,253 | | 26 | 424,025 | | 26 | 424,025 | | 54 | 923,657 | | 2,143,895 |
| WHOLESALE | 5 | 561,680 | 152,064 | | 11 | 28,806 | | 207 | 2,389,648 | | 207 | 2,389,648 | | 509 | 5,290,574 | | 8,863,944 |
| BUILDING MATERIAL | 2 | 135,396 | 122,885 | | 2 | 1,142 | | 34 | 350,915 | | 34 | 350,915 | | 80 | 423,055 | | 1,154,644 |
| AUTO DEALERS | 1 | 115,921 | | | 6 | 8,517 | | 38 | 557,420 | | 38 | 557,420 | | 103 | 1,166,815 | | 2,169,720 |
| RESTURANTS | 1 | 65,700 | | | 5 | 6,819 | | 48 | 475,978 | | 48 | 475,978 | | 196 | 1,428,161 | | 4,302,618 |
| FINANCE | 2 | 160,571 | 4,607 | | 2 | 2,599 | | 34 | 400,855 | | 34 | 400,855 | | 80 | 883,338 | | 1,595,732 |
| HOTELS | | | | | | | | 18 | 203,504 | | 18 | 203,504 | | 51 | 529,598 | | 1,218,825 |
| PERSONAL SERVICES | | | | | 18 | 31,627 | | 247 | 3,197,200 | | 247 | 3,197,200 | | 629 | 5,518,275 | | 10,404,984 |
| MISCELLANEOUS | 53 | 5,043,639 | 474,974 | | 134 | 390,773 | | 2,796 | 34,432,243 | | 2,796 | 34,432,243 | | 7,787 | 78,171,294 | | 141,316,753 |
| STATE & LOCAL GOVERNMENT | 10 | 1,487,513 | 121,154 | | 34 | 71,119 | | 547 | 7,702,980 | | 547 | 7,702,980 | | 1,254 | 8,697,472 | | 17,220,404 |
| INDUSTRY TOTAL | 114 | 12,614,379 | 1,007,261 | | 299 | 831,190 | | 4,903 | 62,868,273 | | 4,903 | 62,868,273 | | 12,908 | 134,125,151 | | 237,878,174 |
| MED. ONLY CASES | | | | | | | | 8 | 90,482 | | 8 | 90,482 | | | | | |
| TOTALS | 114 | 12,614,379 | 1,007,261 | | 299 | 831,190 | | 4,903 | 62,868,273 | | 4,903 | 62,868,273 | | 12,908 | 134,125,151 | | 237,878,174 |

SOUTH CAROLINA WORKERS' COMPENSATION COMMISSION
 NUMBER AND COST OF DISABILITY BY INDUSTRY GROUP FOR CASES CLOSED FROM 07/01/05 THRU 06/30/06
 (CONTINUED)

| | # INC | REL | COMP | # INC | MEDICAL ONLY | # INC | MEDICAL | # INC | COMP | MEDICAL | DAYS LOST |
|-----------------------------|--------|-------------|--------|------------|--------------|-------------|-------------|-----------|-------|---------|-----------|
| | | ----- | ----- | ----- | ----- | ----- | ----- | ----- | ----- | ----- | ----- |
| AGRICULTURE | 47 | 1,656,617 | 26 | 50,987 | 162 | 2,483,081 | 989,594 | 14,539 | | | |
| MINING-QUARRYING | | | | | 1 | 658 | 4,123 | 24 | | | |
| BUILDING CONSTRUCTION | 217 | 8,430,229 | 51 | 152,451 | 479 | 13,649,196 | 8,642,165 | 85,592 | | | |
| ROAD CONSTRUCTION | 42 | 769,960 | 9 | 24,704 | 86 | 1,613,959 | 931,118 | 12,227 | | | |
| SPECIAL TRADE CONSTRUCTION | 271 | 9,956,798 | 89 | 541,622 | 658 | 17,493,826 | 9,030,131 | 70,966 | | | |
| FOOD | 134 | 4,358,820 | 88 | 131,408 | 414 | 6,680,914 | 3,623,076 | 46,019 | | | |
| TEXTILE MILLS | 101 | 3,526,840 | 75 | 87,615 | 327 | 6,729,700 | 3,559,411 | 50,521 | | | |
| CLOTHING MANUFACTURING | 12 | 279,046 | 1 | 1,498 | 25 | 445,197 | 244,204 | 3,574 | | | |
| LUMBER AND WOOD | 88 | 2,126,831 | 38 | 125,450 | 228 | 4,102,617 | 2,367,265 | 25,148 | | | |
| FURNITURE MANUFACTURING | 13 | 287,809 | 5 | 8,992 | 38 | 570,878 | 235,064 | 5,815 | | | |
| PAPER-PULP MILLS | 25 | 1,011,610 | 7 | 8,929 | 205 | 1,580,033 | 716,673 | 7,699 | | | |
| PRINTING PUBLISHING | 12 | 338,848 | 7 | 6,475 | 37 | 592,420 | 395,699 | 4,592 | | | |
| CHEMICALS & ALLIED | 51 | 1,795,794 | 31 | 82,656 | 175 | 3,105,494 | 1,436,444 | 16,141 | | | |
| PETROLEUM REFINING | 25 | 710,302 | 18 | 27,264 | 75 | 1,130,714 | 560,264 | 4,043 | | | |
| RUBBER-PLASTIC PRODUCTS | 52 | 1,802,350 | 19 | 39,442 | 155 | 3,433,240 | 1,402,094 | 22,982 | | | |
| STONE GLASS CLAY CONCRETE | 55 | 2,335,292 | 29 | 80,371 | 159 | 3,738,241 | 1,420,739 | 25,916 | | | |
| METAL INDUSTRY | 45 | 2,115,379 | 23 | 873,669 | 236 | 3,306,311 | 2,071,381 | 19,583 | | | |
| FABRICATED METAL PRODUCTS | 50 | 1,921,046 | 13 | 30,010 | 110 | 3,374,925 | 1,639,629 | 17,956 | | | |
| MACHINERY INSTALLATION | 31 | 971,494 | 10 | 22,546 | 75 | 1,653,008 | 689,240 | 10,481 | | | |
| ELECTRICAL MACHINERY | 17 | 709,631 | 4 | 13,022 | 38 | 1,466,551 | 464,508 | 9,329 | | | |
| TRANSPORT. REPAIR & MFG. | 65 | 3,903,763 | 11 | 34,854 | 203 | 5,822,042 | 1,172,006 | 19,193 | | | |
| MISCELLANEOUS MANUFACTURING | 177 | 5,433,077 | 92 | 211,281 | 615 | 12,620,109 | 5,923,571 | 15,165 | | | |
| TRANSPORTATION | 47 | 1,760,280 | 23 | 21,191 | 152 | 3,088,192 | 1,584,737 | 17,153 | | | |
| MOTOR FREIGHT | 112 | 4,690,468 | 87 | 127,733 | 458 | 10,207,876 | 4,273,888 | 55,823 | | | |
| COMMUNICATION | 20 | 800,770 | 12 | 21,523 | 87 | 1,657,976 | 917,498 | 9,383 | | | |
| ELECTRIC LIGHT & POWER | 31 | 1,233,054 | 33 | 40,286 | 183 | 2,643,922 | 2,227,720 | 16,532 | | | |
| WHOLESALE | 368 | 8,585,734 | 189 | 618,100 | 1,124 | 16,856,442 | 10,489,804 | 105,269 | | | |
| BUILDING MATERIAL | 49 | 1,337,689 | 22 | 76,392 | 154 | 2,248,197 | 1,558,816 | 11,313 | | | |
| AUTO DEALERS | 87 | 2,995,517 | 28 | 71,311 | 235 | 4,844,190 | 2,412,865 | 19,051 | | | |
| RESTURANTS | 198 | 2,766,906 | 83 | 106,674 | 584 | 4,743,564 | 4,726,268 | 29,244 | | | |
| FINANCE | 86 | 2,645,511 | 52 | 103,926 | 245 | 4,092,874 | 1,992,545 | 28,675 | | | |
| HOTELS | 56 | 1,136,013 | 30 | 38,166 | 145 | 1,869,115 | 1,326,043 | 15,385 | | | |
| PERSONAL SERVICES | 458 | 12,114,291 | 287 | 888,334 | 1,515 | 20,861,393 | 12,406,329 | 93,685 | | | |
| MISCELLANEOUS | 6,140 | 177,882,206 | 3,488 | 8,111,968 | 20,087 | 295,701,063 | 166,001,064 | 1,488,844 | | | |
| STATE & LOCAL GPVERNMENT | 947 | 18,142,353 | 425 | 1,341,732 | 2,539 | 36,083,937 | 22,776,585 | 169,406 | | | |
| INDUSTRY TOTAL | 10,129 | 290,532,328 | 5,405 | 14,122,582 | 32,009 | 500,491,855 | 280,212,561 | 2,547,268 | | | |
| MED. ONLY CASES | | | 45,561 | 30,969,664 | | 30,969,664 | | | | | |
| TOTALS | 10,129 | 290,532,328 | 50,966 | 45,092,246 | 32,009 | 500,491,855 | 311,182,225 | 2,547,268 | | | |

SOUTH CAROLINA WORKERS' COMPENSATION COMMISSION
 LOCATION OF INJURY BY NATURE OF INJURY FOR CASES CLOSED FROM 07/01/05 THROUGH 06/30/06

| | LOSS OF USE AMPUTATION | DISLOCATION | BURNS | CUTS AND ABRASIONS | TRAUMA | BUISES SPRAINS | FRACTURES | OCC. DISEASES | HERNIAS | ALL OTHERS |
|--------------------|---------------------------|-------------|-------|-----------------------|--------|-------------------|-----------|------------------|---------|------------|
| BRAIN/SKULL | | | | | | | | | | |
| EYE | 5 | | 18 | 48 | 1 | 142 | 8 | 28 | | 96 |
| EAR | 177 | | 1 | 3 | 1 | 44 | | 9 | | 245 |
| NOSE | | | 2 | 12 | 1 | 14 | 27 | 2 | | 38 |
| MOUTH/TOOTH | 1 | 2 | 1 | 32 | 4 | 25 | 3 | 3 | | 16 |
| NECK | | 18 | 10 | 9 | | 540 | 16 | 22 | | 61 |
| HEAD/FACE | | | 33 | 198 | 8 | 308 | 33 | 14 | | 152 |
| SPINE | | 6 | | | 1 | 138 | 12 | | | 191 |
| BACK | | 1 | 3 | 10 | 11 | 4,441 | | 18 | | 64 |
| RIBS/SIDE/SHOULDER | | 85 | 10 | 21 | 4 | 1,489 | 108 | 51 | 7 | 843 |
| LUNGS | | | 1 | | | 1 | | 548 | | 408 |
| THORAX | | | | | | | | | | 165 |
| HIP/PELVIS | | 6 | 1 | 6 | | 226 | 62 | 2 | | 1 |
| ABDOMEN | | | 3 | 12 | 1 | 205 | | 5 | 278 | 86 |
| TRUNK | | | 6 | 6 | 2 | 239 | | 10 | | 109 |
| ARM | 2 | 16 | 90 | 179 | 6 | 830 | 244 | 88 | | 61 |
| WRIST | | 2 | 6 | 42 | 1 | 494 | 200 | 261 | | 400 |
| HAND | 4 | 5 | 112 | 360 | 43 | 478 | 140 | 273 | | 240 |
| FINGER | 175 | 16 | 20 | 781 | 115 | 316 | 336 | 34 | | 396 |
| UPPER EXTR. | 2 | 1 | 34 | 24 | 5 | 302 | 35 | 70 | | 420 |
| LEG/THIGH | 4 | 2 | 30 | 123 | 10 | 402 | 158 | 11 | | 405 |
| KNEE | 3 | 37 | 6 | 52 | 4 | 1,696 | 71 | 8 | | 196 |
| ANKLE | | 7 | 13 | 14 | 2 | 672 | 246 | 1 | | 675 |
| FOOT | 4 | 1 | 53 | 60 | 26 | 336 | 273 | 4 | | 189 |
| TOE | 6 | 1 | 1 | 11 | 8 | 38 | 77 | 1 | | 233 |
| LOWER EXTR. | 1 | 1 | 15 | 14 | 2 | 239 | 24 | 9 | | 27 |
| ALL OTHERS | 3 | 6 | 95 | 98 | 22 | 1,629 | 112 | 401 | | 205 |
| SUB TOTALS | 387 | 213 | 564 | 2,115 | 278 | 15,250 | 2,256 | 1,882 | 285 | 9,879 |
| MED. ONLY CASES | | | | | | | | | | |
| TOTALS | 387 | 213 | 564 | 2,115 | 278 | 15,250 | 2,256 | 1,882 | 285 | 9,879 |

SOUTH CAROLINA WORKERS' COMPENSATION COMMISSION
 LOCATION OF INJURY BY NATURE OF INJURY FOR CASES CLOSED FROM 07/01/05 THROUGH 06/30/06
 (CONTINUED)

| LOCATION | # OF INC | COMPENSATION | TOTALS | | |
|--------------------|----------|--------------|-------------|-----------|------------|
| | | | MEDICAL | DAYS LOST | PERCENTAGE |
| BRAIN/SKULL | 275 | 5,999,105 | 2,364,296 | 17,193 | 000.84 |
| EYE | 370 | 1,661,246 | 1,057,865 | 13,018 | 001.12 |
| EAR | 234 | 521,711 | 68,395 | 245 | 000.71 |
| NOSE | 74 | 360,841 | 404,186 | 625 | 000.23 |
| MOUTH/TOOTH | 203 | 737,047 | 606,179 | 1,925 | 000.62 |
| NECK | 767 | 15,544,109 | 7,385,053 | 66,376 | 002.32 |
| HEAD/FACE | 785 | 12,147,339 | 5,990,514 | 55,570 | 002.38 |
| SPINE | 221 | 4,668,414 | 2,380,950 | 23,183 | 000.67 |
| BACK | 5,327 | 120,194,530 | 59,101,961 | 646,831 | 016.09 |
| RIBS/SIDE/SHOULDER | 2,183 | 35,608,404 | 22,511,237 | 177,021 | 006.60 |
| LUNGS | 715 | 6,754,206 | 928,369 | 24,766 | 002.16 |
| THORAX | 1 | | 19 | | 000.01 |
| HIP/PELVIS | 389 | 10,003,383 | 5,733,236 | 68,649 | 001.18 |
| ABDOMEN | 613 | 2,377,236 | 3,210,870 | 22,036 | 001.86 |
| TRUNK | 324 | 5,418,079 | 3,808,757 | 29,483 | 000.98 |
| ARM | 1,855 | 23,955,584 | 15,053,184 | 118,044 | 005.61 |
| WRIST | 1,246 | 12,229,063 | 7,186,324 | 65,872 | 003.77 |
| HAND | 1,811 | 16,095,958 | 9,958,378 | 79,168 | 005.47 |
| FINGER | 2,213 | 10,909,677 | 9,751,830 | 48,919 | 006.69 |
| UPPER EXTR. | 878 | 11,582,627 | 6,602,617 | 47,356 | 002.66 |
| LEG/THIGH | 936 | 16,095,285 | 12,022,065 | 100,643 | 002.83 |
| KNEE | 2,552 | 38,652,013 | 23,986,540 | 211,285 | 007.71 |
| ANKLE | 1,144 | 12,044,097 | 9,279,419 | 87,014 | 003.46 |
| FOOT | 990 | 10,046,972 | 7,009,458 | 62,016 | 003.00 |
| TOE | 170 | 1,499,449 | 686,330 | 8,469 | 000.52 |
| LOWER EXTR. | 510 | 10,793,916 | 5,245,087 | 54,923 | 001.55 |
| ALL OTHERS | 6,323 | 114,138,218 | 56,849,782 | 508,070 | 019.10 |
| SUB TOTALS | 33,109 | 500,038,509 | 279,182,901 | 2,538,700 | 100.00% |
| MED. ONLY CASES | 45,561 | | 30,969,664 | | |
| TOTALS | 78,670 | 500,038,509 | 310,152,565 | 2,538,700 | |

SOUTH CAROLINA WORKERS' COMPENSATION COMMISSION
 TYPE OF COMPENSATION BY COUNTY OF OCCURENCE FOR CASES CLOSED FROM 07/01/05 THRU 06/30/06

| | DEATH | DISF | DISM | LOSS OF USE PERM PART | TEMP TOTAL | REL | MEDICAL ONLY | #INC. | TOTALS COMP | MEDICAL |
|-----------------|-------|------|------|--------------------------|---------------|--------|-----------------|--------|----------------|-------------|
| UNKNOWN | | | | | | | | | | |
| ABBEVILLE | 1 | | | 22 | 65 | 40 | 39 | 369 | 2,513,974 | 1,463,530 |
| AIKEN | 13 | 10 | | 16 | 64 | 56 | 15 | 134 | 2,747,657 | 1,735,566 |
| ALLENDALE | 1 | 1 | | 106 | 287 | 247 | 209 | 949 | 14,565,665 | 5,980,879 |
| ANDERSON | 4 | 14 | 1 | 7 | 21 | 26 | 6 | 59 | 1,333,597 | 718,196 |
| BAMBERG | | 1 | | 179 | 491 | 403 | 215 | 1,230 | 20,971,409 | 10,509,275 |
| BARWELL | 1 | | | 8 | 34 | 27 | 8 | 68 | 1,312,528 | 515,807 |
| BEAUFORT | 2 | 2 | | 12 | 49 | 40 | 15 | 112 | 2,296,097 | 1,558,423 |
| BERKELEY | 2 | 10 | 1 | 103 | 395 | 279 | 192 | 1,003 | 13,920,408 | 9,221,335 |
| CALHOUN | | 1 | | 119 | 290 | 234 | 172 | 768 | 13,718,581 | 8,379,299 |
| CHARLESTON | 12 | 22 | 1 | 7 | 25 | 21 | 10 | 63 | 651,247 | 384,129 |
| CHEROKEE | 2 | 10 | | 500 | 1,668 | 1,448 | 518 | 3,786 | 60,306,921 | 31,527,493 |
| CHESTER | 2 | 2 | | 90 | 168 | 103 | 48 | 394 | 5,765,279 | 3,926,091 |
| CHESTERFIELD | 3 | 3 | | 34 | 87 | 83 | 34 | 242 | 3,020,274 | 1,511,520 |
| CLARENDON | 1 | 4 | | 48 | 110 | 74 | 39 | 262 | 4,026,030 | 2,603,839 |
| COLLETON | 1 | | | 23 | 71 | 68 | 34 | 187 | 2,192,293 | 1,107,987 |
| DARLINGTON | 1 | 4 | | 37 | 106 | 98 | 33 | 243 | 4,185,638 | 2,318,868 |
| DILLON | 1 | 1 | | 39 | 120 | 96 | 46 | 296 | 4,800,891 | 2,500,148 |
| DORCHESTER | 3 | 2 | | 20 | 55 | 44 | 24 | 136 | 1,905,419 | 853,104 |
| EDGEFIELD | | 1 | | 111 | 290 | 229 | 101 | 676 | 12,150,419 | 6,089,239 |
| FAIRFIELD | | | | 11 | 34 | 20 | 37 | 108 | 1,041,591 | 929,790 |
| FLORENCE | 1 | 9 | 1 | 29 | 68 | 47 | 28 | 174 | 2,877,132 | 1,435,997 |
| GEORGETOWN | | 5 | | 174 | 455 | 319 | 184 | 1,114 | 17,532,277 | 13,077,767 |
| GREENVILLE | 7 | 31 | 1 | 63 | 240 | 170 | 78 | 747 | 10,254,624 | 6,381,187 |
| GREENWOOD | 1 | 6 | | 728 | 1,604 | 1,212 | 589 | 3,968 | 59,946,879 | 27,213,262 |
| HAMPTON | 1 | 3 | | 77 | 217 | 158 | 102 | 536 | 6,655,617 | 3,474,949 |
| HORRY | 10 | 17 | | 20 | 59 | 52 | 15 | 384 | 2,479,392 | 1,540,671 |
| JASPER | 1 | 1 | | 224 | 825 | 516 | 302 | 1,850 | 25,486,721 | 18,433,369 |
| KERSHAW | 2 | 4 | | 7 | 42 | 31 | 12 | 91 | 1,677,851 | 907,692 |
| LANCASTER | | 6 | 1 | 56 | 158 | 103 | 67 | 397 | 4,214,478 | 2,105,525 |
| LAURENS | 1 | 3 | | 40 | 103 | 78 | 45 | 266 | 5,077,032 | 2,603,918 |
| LEE | | | | 65 | 166 | 140 | 73 | 408 | 5,598,448 | 2,489,251 |
| LEXINGTON | 3 | 26 | 1 | 8 | 35 | 28 | 12 | 81 | 1,036,491 | 783,270 |
| MCCORMICK | | 2 | | 261 | 795 | 537 | 271 | 1,751 | 25,285,111 | 12,783,423 |
| MARION | 3 | 3 | | 2 | 11 | 13 | 7 | 34 | 610,541 | 427,027 |
| MARLBORO | 1 | 3 | | 19 | 74 | 40 | 32 | 157 | 2,629,408 | 1,337,470 |
| NEWBERRY | 6 | 5 | | 35 | 51 | 45 | 27 | 159 | 2,567,937 | 1,858,811 |
| OCONEE | | 2 | | 61 | 129 | 103 | 45 | 305 | 6,175,300 | 2,627,046 |
| ORANGEBURG | 2 | 14 | | 87 | 194 | 148 | 62 | 427 | 7,827,411 | 4,502,662 |
| PICKENS | 1 | 4 | | 85 | 287 | 223 | 89 | 638 | 8,658,445 | 5,833,513 |
| RICHLAND | 13 | 32 | 1 | 115 | 237 | 195 | 84 | 597 | 12,883,052 | 6,529,995 |
| SALUDA | | 1 | | 565 | 1,365 | 1,009 | 634 | 4,357 | 48,084,125 | 28,270,793 |
| SPARTANBURG | 8 | 14 | | 2 | 18 | 14 | 9 | 44 | 578,340 | 453,877 |
| SUMTER | 2 | 10 | | 334 | 807 | 655 | 309 | 2,074 | 37,308,044 | 20,081,371 |
| UNION | | 3 | | 123 | 289 | 235 | 91 | 708 | 10,353,877 | 7,375,798 |
| WILLIAMSBURG | 1 | | | 26 | 56 | 39 | 21 | 130 | 2,091,849 | 1,561,630 |
| YORK | 1 | 6 | | 31 | 76 | 57 | 17 | 154 | 2,711,308 | 2,031,886 |
| OUT OF STATE | 3 | 1 | | 147 | 392 | 256 | 182 | 1,039 | 11,708,598 | 7,602,770 |
| | | | | 27 | 103 | 73 | 11 | 289 | 4,850,660 | 2,663,964 |
| SUB-TOTALS | 114 | 299 | 8 | 4,903 | 13,286 | 10,132 | 5,193 | 33,964 | 500,586,866 | 280,223,412 |
| MED. ONLY CASES | | | | | | | 45,561 | 45,561 | | 30,969,664 |
| TOTALS | 114 | 299 | 8 | 4,903 | 13,286 | 10,132 | 50,754 | 79,525 | 500,586,866 | 311,193,076 |

**SOUTH CAROLINA WORKERS' COMPENSATION COMMISSION
PUBLICATIONS**

| | |
|-----------|--|
| Form 2 | Poster |
| Form 5 | Corporate Officer Notice To Reject |
| Form 6 | Application To Create A Self-Insurance Fund |
| Form 6A | Application For Membership In A Self-Insurance Fund |
| Form 7 | Application To Individually Self-Insure |
| Form 7A | Corporate Guaranty |
| Form 8 | Proof Of Compliance, Surety Bond |
| Form 8A | Proof Of Compliance, Securities Pledge |
| Form 8B | Proof Of Compliance, Memorandum Of Understanding, And Irrevocable Letter Of Credit |
| Form 8C | Proof Of Compliance, Excess Insurance |
| Form 9 | Certificate For Self-Insurance |
| Form 10 | Self-Insurance Tax Return (Reserved) |
| Form 11 | Self-Insurer's Quarterly Financial Report |
| Form 11A | Self-Insurer's Annual Financial Report |
| Form 12-A | Employer's First Report Of Injury (ACORD 4) |
| Form 12-M | Report Of Injury, Medical Only |
| Form 14-A | Physician's Report and Itemized Statement HCFA-1500 for physicians UB-92 for hospitals |
| Form 15 | Temporary Compensation Report |
| Form 15S | Supplemental Report of Varying Temporary Partial Payments |
| Form 16 | Agreement for Permanent Disability/Disfigurement Compensation |
| Form 17 | Receipt of Compensation |
| Form 18 | Periodic Report |
| Form 19 | Status Report And Compensation Receipt |
| Form 20 | Statement of Earnings of Injured Employee |
| Form 21 | Employer's Request For Hearing |
| Form 23 | Order Closing File |
| Form 24 | Application For Lump Sum Award |
| Form 27 | Subpoena |
| Form 30 | Request For Commission Review |
| Form 31 | Notice of Review Hearing |
| Form 32 | Request To Waive Appeal Filing Fee |
| Form 36 | Medical Fee Approval |
| Form 38 | Employer's Withdrawal Of Election To Adopt The South Carolina Workers' Compensation Act |

PUBLICATIONS

(Continued)

| | |
|------------|---|
| Form 40 | Motion for Expedited Adjudication |
| Form 50 | Employee's Notice of Claim And/Or Request For Hearing |
| Form 51 | Employer's Answer To Request For Hearing |
| Form 52 | Employee's Notice Of Claim And/Or Request For Hearing, Death Case |
| Form 53 | Employer's Answer To Request For Hearing, Death Case |
| Form 54 | Employer's Notice Of Claim And/Or Request For Hearing |
| Form 55 | Second Injury Fund's Answer To Employer's Request For Hearing |
| Form 58 | Pre-Hearing Brief |
| Form 61 | Attorney Fee Petition |
| Form 62 | Compliance Agreement |
| Form 65 | Waiver of Claim Involving An Occupational Disease |
| Form SIF-1 | Agreement to Reimburse Compensation |
| Form SIF-2 | Reimbursement Request |
| Form SIF-3 | Employer's Notice of Claim For Reimbursement From Second Injury Fund |
| Form SIF-4 | Medical Information Request |
| Form S-1 | Notice of Third Party Action, Employer |
| Form S-2 | Notice Of Third Party Action, Employee |
| Form S-3 | Entitlement To Right Of Action |
| Form S-4 | Court Certificate |
| Bulletins | "For You" (Claims Information) "What Every Employer Should Know About Workers' Compensation" "Frequently Asked Questions About Informal Conferences" |
| | <i>Claims Administration Made Easy Workbook</i> |
| | <i>Commission Update</i> |
| | <i>South Carolina Workers' Compensation Law (The West Group, Publishers)</i> |
| | <i>Medical Services Provider Manual</i> |
| | <i>Hospital and Ambulatory Surgical Center Payment Manual</i> |