



South Carolina Department of Health and Environmental Control

Update on the Plantation Pipe Line / Lewis Drive Release Located in Belton, SC

June 14, 2017

Don Siron, P.G.
Assistant Bureau Chief
Bureau of Land and Waste Management

Petroleum Product Recovery - Status

Petroleum product recovery is ongoing.

6,861 gallons of petroleum product recovered between February 1, 2017 and May 11, 2017.

A total of **221,706 gallons** of petroleum product recovered using vacuum extraction as of May 11, 2017.



Surface Water Protection - Status

Startup Plan for Surface Water Protection Measures approved February 27, 2017.

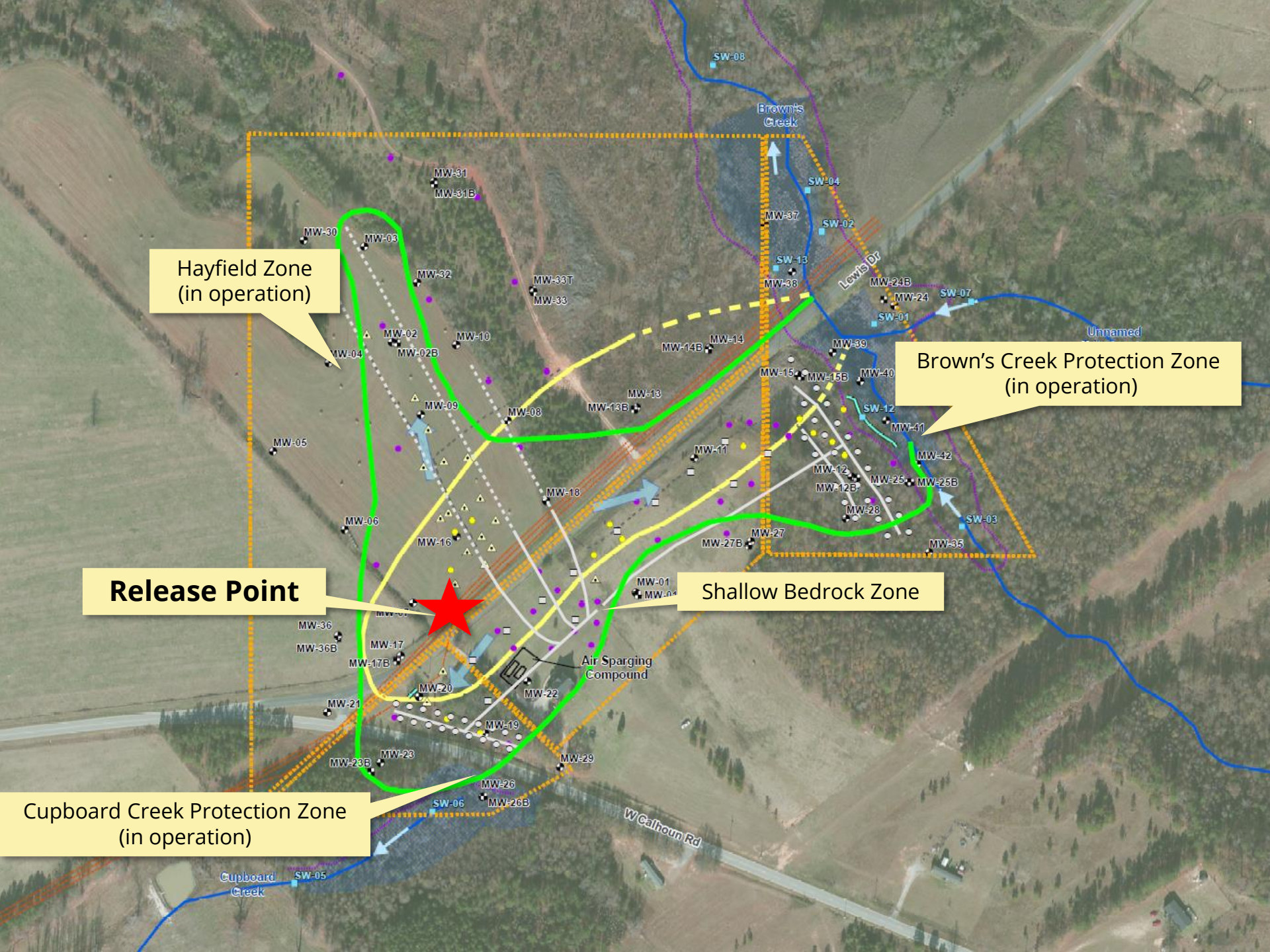
Vertical biosparge wells up-gradient of Brown's Creek and Cupboard Creek began Operating March 6, 2017.

Two stream aerators in Brown's Creek began operating March 6, 2017.

Air monitoring conducted with no issues as part of this start up.

Absorbent mats to address seeps in the area of Brown's Creek were Installed.





Hayfield Zone
(in operation)

Brown's Creek Protection Zone
(in operation)

Release Point

Shallow Bedrock Zone

Cupboard Creek Protection Zone
(in operation)

Air Sparging
Compound

Brown's
Creek

Cupboard
Creek

Lewis Dr

W Calhoun Rd

Unnamed

Corrective Action - Status

The Corrective Action Plan Addendum received conditional DHEC approval April 26, 2017

Horizontal biosparging wells in the Hayfield area began operation May 9, 2017



Biosparge Control Building- Interior



Biosparge Control Building- Street View

Path Forward

- Continued periodic meetings with Plantation Pipe Line.
- Continued community meetings to provide updates on the cleanup.
- Continued oversight of petroleum removal, monitoring, and operation of the groundwater cleanup system.

Information regarding the site can be viewed on our website:

www.scdhec.gov/LewisDrivePipelineSpill

Surface Water Sampling Event

- In response to community concerns expressed during the January 31, 2017 Public Meeting.
- On February 28, 2017, DHEC collected surface water samples from **23 locations** from the site to Broadway



Anderson County, Plantation Pipe Line, and DHEC sent samples to different laboratories.

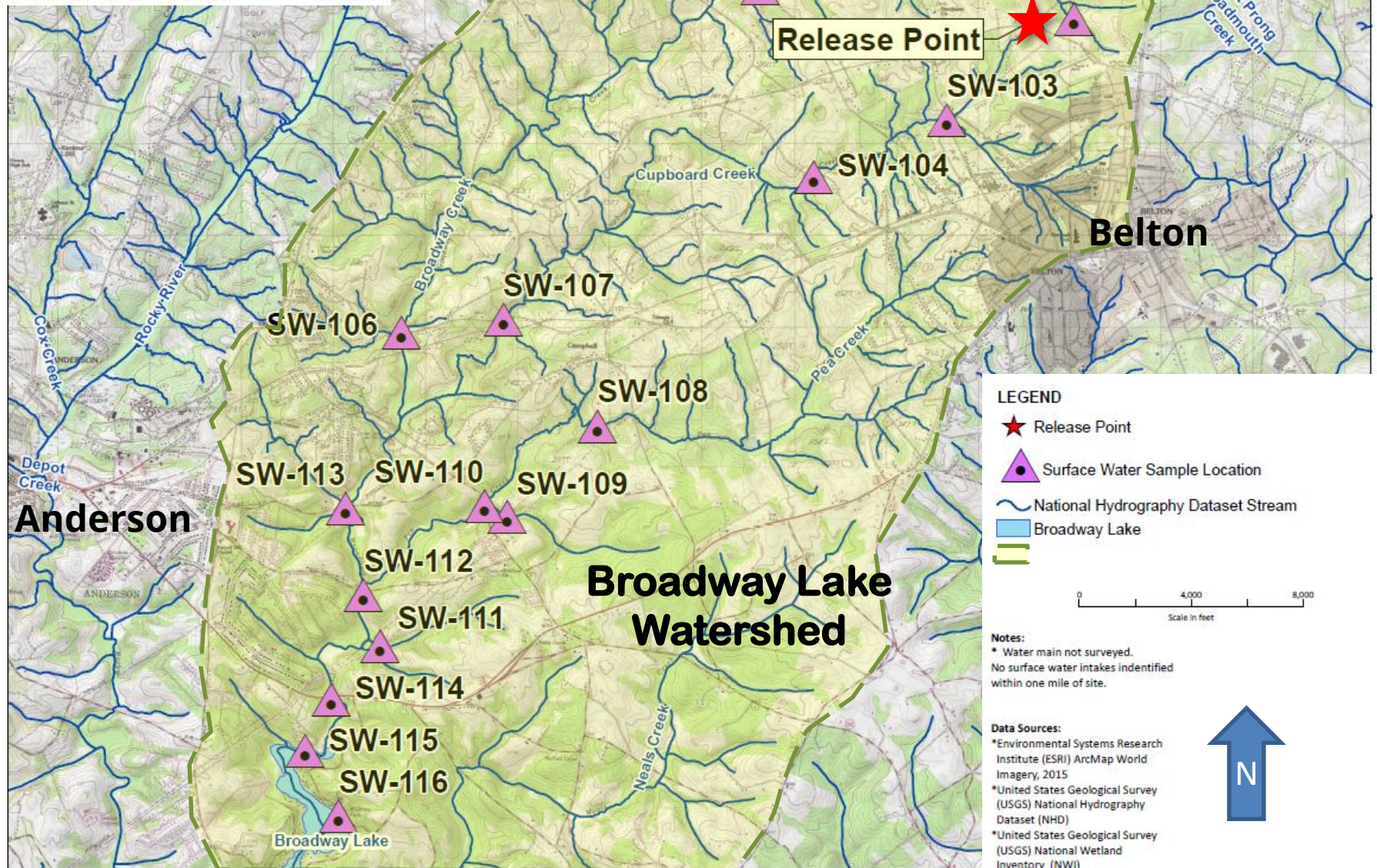
11 miles to
Broadway Lake
along Brown's Creek

Release Point

10 miles to Broadway
Lake along Cupboard
Creek

1.7 miles to
downtown Belton
from release point





LEGEND

- Release Point
- Surface Water Sample Location
- National Hydrography Dataset Stream
- Broadway Lake

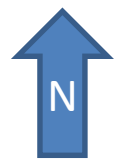
Scale in feet: 0, 4,000, 8,000

Notes:

- * Water main not surveyed.
- No surface water intakes identified within one mile of site.

Data Sources:

- *Environmental Systems Research Institute (ESRI) ArcMap World Imagery, 2015
- *United States Geological Survey (USGS) National Hydrography Dataset (NHD)
- *United States Geological Survey (USGS) National Wetland Inventory (NWI)



Surface Water Sampling Results

Results were consistent from all three labs.

No detects of petroleum constituents above risk based screening levels at **any** of the locations except for three near the release site in Brown's Creek at SW-1, SW-2, and SW-12 (consistent with previous data).



SW- 116 Broadway Lake



SW-108 Pea Creek

CONTACT US

Don Siron, P.G., Assistant Chief
Bureau of Land and Waste Management
2600 Bull Street
Columbia, SC 29201

(803) 898-2000

Stay Connected